

# AFGRI Devon Opberging/Bunker Project

6 bunkers minimum capacity of 4500 m<sup>3</sup>

Total capacity 40,000 m<sup>3</sup>

2,4m Yfels – 748 straight units

2,4m Yfel – 24 x 135 degree corner units

24 Connector Plates

ORIGINAL BOUNDARY

BM 2 (DBM2) 1005.20  
● 571

● 8332

● 581

● 000

● 581

● 000

● 581

ORIGINAL BOUNDARY

● 2121  
● 345  
● 581  
● 000  
● 000  
● 581  
● 000  
● 581

ORIGINAL BOUNDARY

ORIGINAL BOUNDARY

POWER LINE

2018 sign parking and turning area

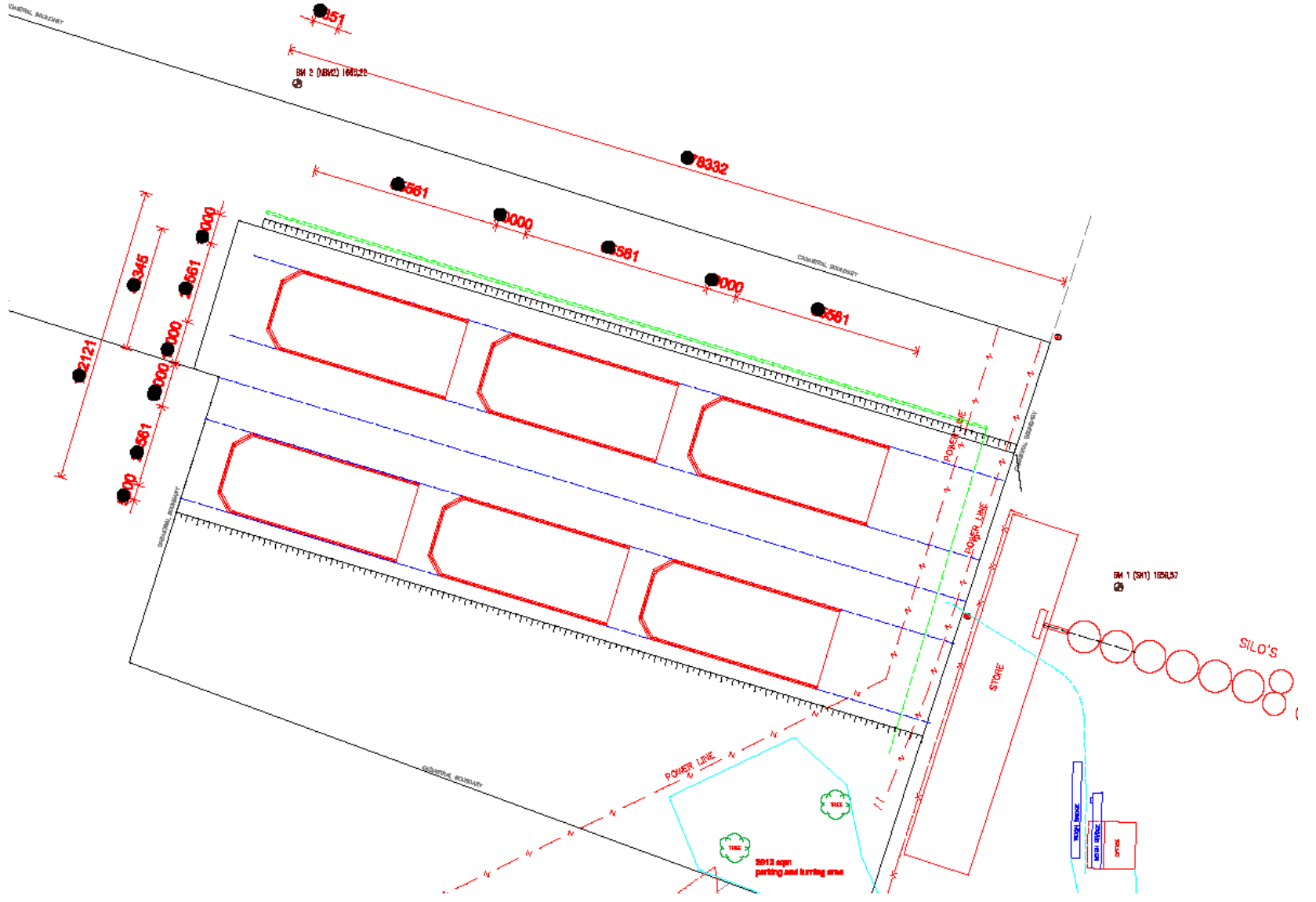
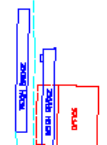
POWER LINE

POWER LINE

STONE

BM 1 (SK1) 1026.57

SILO'S



# AFGRI Covered



# Internal bunker view



# Internal bunker view



# Maize pumped into YFEL bunker



# Side view – complete installation



# Summary

- Total capacity = 40,000 m<sup>3</sup>
- 6 Bunkers
- Supplied for under R2,8m excluding VAT delivered using crane trucks and put directly into place.
- Supplied in less than 80 working days.
- Bunkers available for moving to new site and easily broken down.
- Installation not permanent
- No on-site personnel involved once the ground was prepared for placement of the Yfels.