

**OFFLOADING YFEL'S**

1. YFELS > 2.4m high are delivered horizontally and are to be offloaded using the cast in female thread and stacked on timber/packing as seen in figure 1

CAST IN FEMALE THREAD

TIMBER/PAD

**FIGURE 1**



female threaded insert cast into concrete at centre of gravity

**FIGURE 2**

TIMBER/PAD

TIMBER/PAD

TIMBER/PAD



**PLACING OPTION 1**

4 LEG STRAPS WITH FORKLIFT OR CRANE (BY OTHERS) OR OTHER

OPTIONAL FEMALE THREADED INSERT FOR >3m HIGH YFELS

STRAPS

PINS PROVIDED BY REMACON

**NOTES**

**INSTALLING YFELS**

1. Position, line and level Yfel's on concrete or cement stabilized base, leveling mortar may be required.
2. Drill 4 No. 16mm Ø holes 125mm deep into base slab, using holes in unit as pilots.
3. Insert recommended chemical or other bolt with washer through each hole, and tighten to 100N/m torque.
4. Use grout and a trowel to fill recess and strike off flush.
5. Leave to cure for a minimum of 48 hours before loading Yfel.

**DESIGN PARAMETERS**

Concrete strength = 50MPa  
Cover = 30mm  
Design life = 20years min

Bearing on concrete base, suitable to accept bolts, or onto 10% cement stabilized base (no bolt down).

**For dry bulk retaining:**

F.O.S: overturning = 1.5min  
F.O.S: sliding = 1.5min  
Friction of retained material ≤ 16kg/m³

\*Handling devices to be purchased by customer.

**COPYRIGHT PROTECTED**

This drawing is the property of ReMaCon Products cc and should not be reproduced in anyway without written permission from ReMaCon Products cc

**ReMaCon Products.cc**

REG: 2004/101643/23

VAT: 4270216361

Phone: 011 393 5502

Fax: 011 393 5502

e-mail: remacon@telkomsa.net



**OPTION 3**

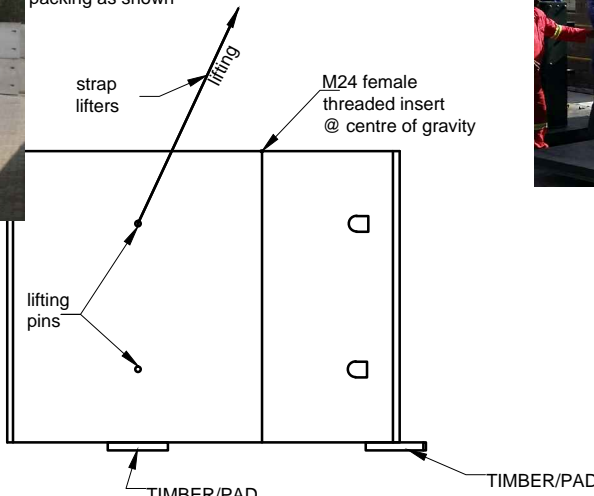
LIFTING MECHANISM FOR FORK-LIFT (ENQUIRE COSTS FROM REMACON)

FORK LIFT FORKS

**PLACING OPTION 2**

**RIGHTING YFEL'S**

2. YFELS must be lifted in a slow and smooth motion using the UPPER lifting hole and stacked on timber OR packing as shown



**POSITIONING YFEL'S**

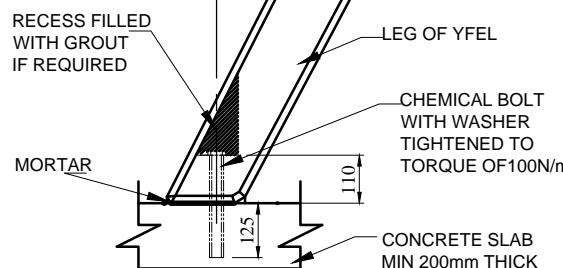
Units to be placed using either option 1, option 2 or option 3



4 LEG STRAPS

lifting pins for use with strap or forklift

bearer pads



**BASE FIXING DETAIL**

TITLE	YFEL HANDLING
SCALE	AS SHOWN
SHEET	A4